



PLUG & PLAY: Log data out-the-box. Standalone. Power via CAN connector



CONFIGURABLE: Filters. Transmit lists. Triggers. Cyclic logging. Silent mode



PRO SPECS: Extractable 8-32 GB SD. 2xCAN/LIN. CAN FD. Zero data loss. 50 µs RTC



FAST & SECURE: Industrial SD card. Data encryption for GDPR/CCPA. Compression



COMPACT: Only 8 x 5 x 2 CM. 100G. Alu enclosure. 4 LEDs. Configure CH2 5V power out



INTEROPERABLE: Convert MDF4 to e.g. CSV, ASC, TRC. Free open source GUI/API

The plug & play 2xCAN/LIN logger records timestamped CAN data (Classical/CAN FD) to the extractable 8 GB industrial SD card.

It's easy-to-use: Simply power the device via your CAN connector to start logging raw data. Extract the data and process it using 100% free open source MDF4 software/API tools - or convert it to your favorite log file format (Vector ASC, PEAK TRC, CSV, ...).

The CANedge1 is ideal for logging of CAN/LIN systems over long periods - e.g. for OEM R&D, diagnostics or legal purposes.

New: The CANedge1 is now available with **optional GPS/IMU**.

Pro specs CAN logger - at half the cost

The CANedge1 combines innovative design, cutting-edge components - and incredibly low costs:

- Dual high speed CAN/LIN (incl. CAN FD) channels
- Extractable 8-32 GB industrial SD card (months of data)
- Binary MDF4 log file format (extensive tool support)
- Advanced message filtering & transmit functionality
- Start/stop logging triggers based on CAN ID & databytes
- Silent mode, bit rate auto-detection, cyclic logging
- CAN/LIN error frame logging
- Data compression & encryption (e.g. for GDPR, CCPA)
- Fast boot time. Safely disconnect during use



Open source software/API - naturally

All software/APIs for the CANedge is 100% free and open source.

Data is stored in the popular MDF4 standard to enable interoperability across CAN tools and custom systems.

Convert: Simple [MDF4 converters](#) let you convert data to e.g. CSV, ASC (Vector), TRC (PEAK) - for use in your favorite tools.

Process: The [asammdf GUI](#) lets you process your data incl. DBC conversion (J1939, OBD2, ...) and graphical plots (Windows/Linux).

Automate: Easy-to-use Python APIs let you automate processing of large amounts of data (incl. quickstart library on [github](#)).

Visualize: Easily visualize data in customizable dashboards

Technical specs

GENERAL

Safety	CE, FCC, IC certified
Voltage tests	Transients ISO 7637-2:2011 by TÜV SÜD
Warranty	1-year warranty
Support	Free, fast & high quality support
Origin	Denmark
Software	100% free & open source
Documentation	Online/PDF documentation

CAN BUS/LIN BUS

Channels	2 x CAN/CAN FD + 2 x LIN (master/slave)
Protocols	J1939, OBD2, CANopen, NMEA2000, FD, ...
Bit-rate	Auto-detect/simple/advanced customization

DATA LOGGING

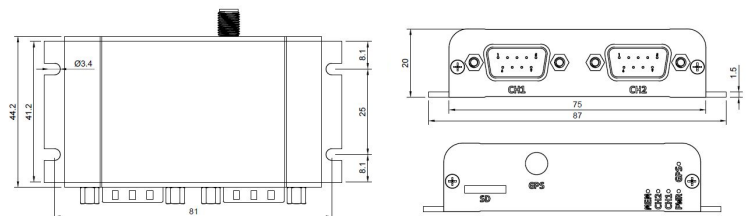
SD CARD	8-32 GB extractable industrial micro SDHC
Real-Time Clock	50 us resolution (incl. battery backup)
File format	MDF4 (.MF4) - easily process/convert
Safety	100% power safe
Configuration	Advanced options (filters, prescalers, compression, error frame logging, data encryption, triggers & more)

GNSS/IMU (optional)

GNSS/IMU	Add 40+ GNSS/IMU signals (see deep dive)
----------	--

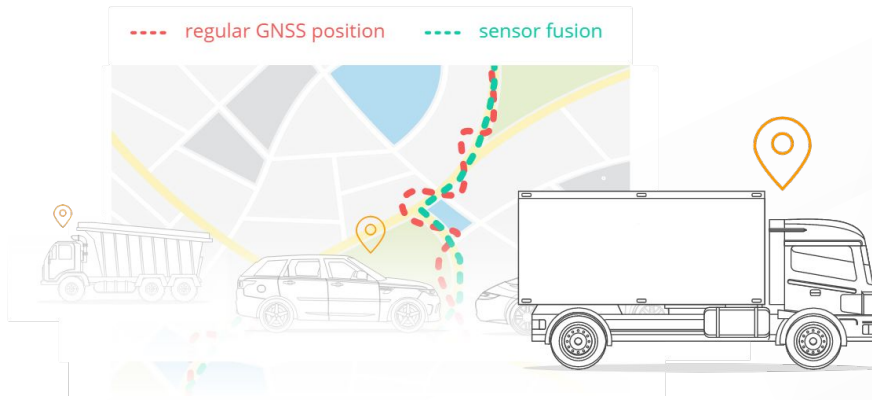
MECHANICAL/SUPPLY

Connectors	2 x DB9 (adapter cables available)
Input supply	+7V to +32V DC via Channel 1 DB9
Consumption	<1W
Dimensions	75 x 47 x 20 mm excl. antenna/flanges
Weight	100 G
LEDs	4 external LEDs (PWR, CH1, CH2, MEM)
Temperature	-25 degC to +75 degC
IP rating	IP40



Trusted by engineers at leading OEMs





GPS & 3D IMU - enrich your data

The CANedge1/CANedge2 comes with optional cutting-edge GNSS/IMU functionality - perfect for use cases like vehicle telematics.

- Add 40+ GNSS/IMU signals to your 2 x CAN/LIN data
- Full GNSS support (GPS, Galileo, BeiDou, GLONASS)
- Built-in gyroscope (roll, pitch, yaw) + accelerometer (X, Y, Z)
- High precision via sensor fusion incl. in GNSS hostile areas
- Signals encoded as 'internal' CAN data (separate channel)
- Configurable message inclusion/frequency (up to 5 Hz)
- DBC file for easy decoding to human-readable form
- Optionally sync the CANedge RTC via precise GNSS time
- Flexible deployment via external GNSS antenna

Technical specs (GPS & IMU)

GNSS & 3D IMU

Module	u-blox NE0-M9V sensor module with built-in gyroscope and accelerometer
GNSS	Combine GPS, Galileo, BeiDou, GLONASS
Sensor Fusion (UDR)	Up to 3x better accuracy incl. in GNSS hostile areas (tunnels, urban)
CAN encoding	GNSS/IMU data output on 'internal' pseudo CAN channel encoded as CAN frames [5 Hz]
Configurable	Filter/prescale internal GNSS/IMU data
Antenna	GPS antenna as option (required for GNSS)

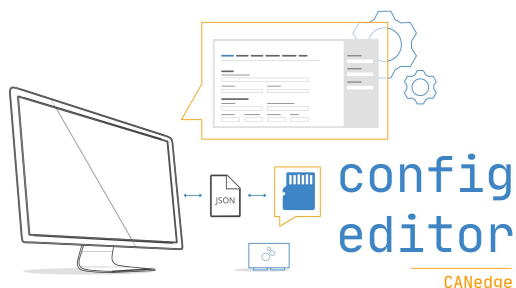
Signals

Position: Longitude and latitude
 Time: High precision timestamp
 Status: Fix type + satellite count
 Speed: Travel speed in m/s and km/h
 Altitude: Altitude in meters
 Roll, pitch, heading [automotives only]
 Distance traveled (since power on)
 3D IMU XYZ acceleration and angular rate
 0-4 circular geofence statuses



The CANedge units with GNSS/IMU are ideal for vehicle telematics, diagnostics and analysis - with easy visualization in e.g. Grafana or asammdf

Trusted by engineers at leading OEMs



Easily configure your device

The CANedge/CANmod JSON config can be modified via a GUI editor - either online via browser or offline (e.g. from the SD).

- GUI editor for user-friendly configuration
- Optionally edit your config directly in e.g. Notepad++
- Batch tool available for large-scale configuration OTA

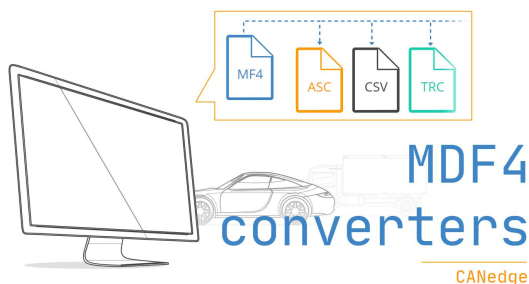
[Learn more](#)

Load data in your favorite tools

Simple MDF4 converters let you convert data to e.g. CSV, ASC (Vector), TRC (PEAK) - for use in your favorite tools.

- Drag & drop files/folders onto the converter to process
- Optionally use via the CLI or in scripts for automation
- Decompress/decrypt as part of conversion
- Works on both Windows/Linux

[Learn more](#)



MDF4 converters

CANedge



DBC convert & plot your data via GUI/API

The free asammdf GUI/API lets you process your data:

- DBC convert data to physical values (incl. J1939, OBD2)
- Easily create advanced graphical plots
- Resample or concatenate your data
- GUI executable for Windows/Linux (no installation)
- Powerful Python API for big data automation

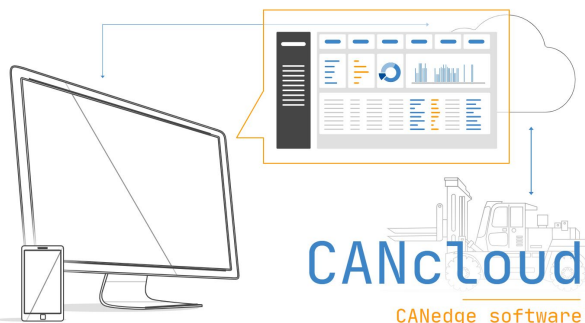
[Learn more](#)

Manage your server devices & data

CANcloud is a simple browser tool that lets you manage your S3 server devices & data from any PC/tablet with no installation.

- Host yourself - or simply log into your server here
- Monitor device status across your entire fleet
- Browse, download, share & delete uploaded log files
- Easily update config/firmware over-the-air
- Browser based (works on all OS & devices)

[Learn more](#)

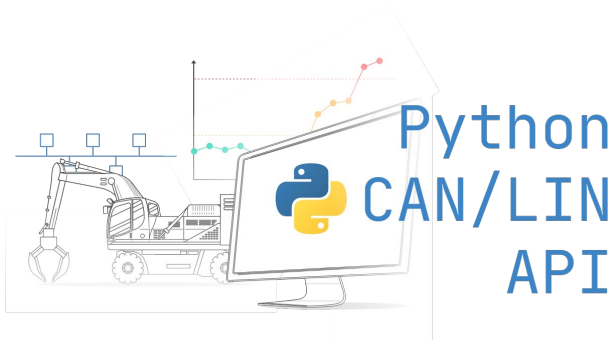
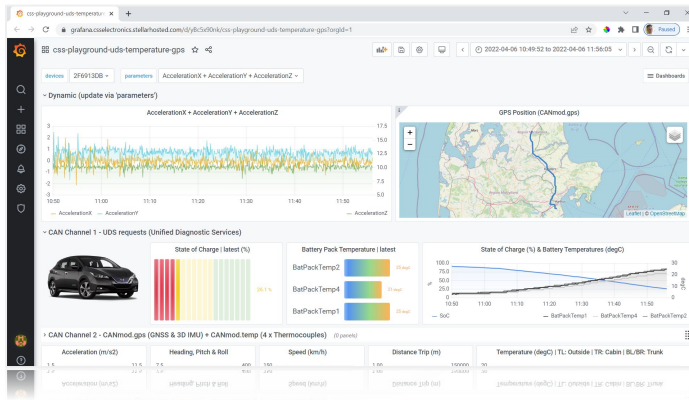


CANcloud

CANedge software

Trusted by engineers at leading OEMs





Automate your data processing

Need to automate your CAN bus data processing via Python? The free Python API enables easy listing, loading and DBC decoding of your data - from local disk or your server.

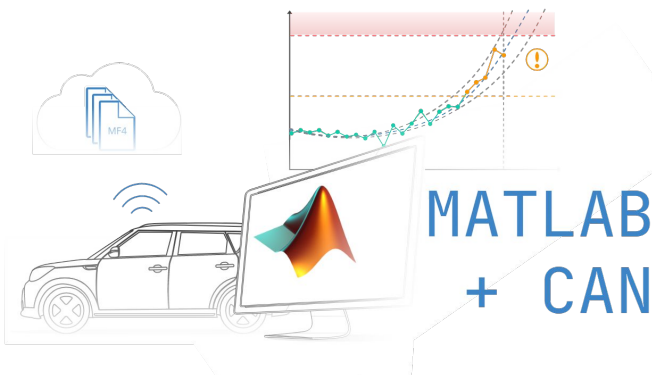
[Learn more](#)

Visualize your data in dashboards

With our plug & play dashboard integrations, you can quickly get your CAN/LIN data integrated with custom Grafana dashboards.

Perfect for presenting specific views e.g. for internal sharing, diagnostics - or as services towards clients.

[Learn more](#)



Easily load data in MATLAB

MF4 data from the CANedge can be natively loaded via MATLAB's Vehicle Network Toolbox - or converted to compatible MAT/CSV.

This makes it simple to continue using MATLAB for end users that are familiar with this tool from other projects.

[Learn more](#)

Trusted by engineers at leading OEMs